

mindray

M6Vet

Hand-carried Ultrasound System

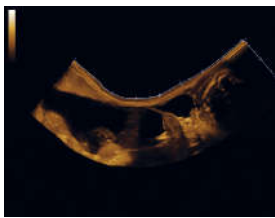


Intelligent Workflow

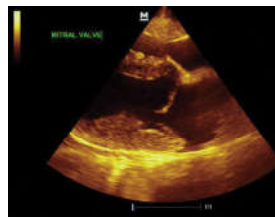
- iTouch™: Intelligent image optimization for B-mode, Color Doppler and PW mode
- Smart Tracking: Continuously track the color flow and optimize the best color box in real time scanning
- Smart Doppler: Automatically optimize the size and position of color box and Doppler gate placement to ensure optimal signal color and spectral Doppler sampling

Comprehensive Functionalities

- iScape™: real-time panoramic imaging with velocity indicator, a very useful tool to evaluate horse tendons
- Free Xros™ Imaging: Anatomical M-mode can support ejection fraction (EF) measurements offline and significantly shorten exam times
- Advanced cardiac function assessment packages including Free Xros™ CM Imaging: Anatomical Curved M-mode and Tissue Doppler imaging



Turtle-Bladder-iScape™



Mitral Valve



Canine Spleen Mass



Turtle-Ovary & Spawn

High-capacity Battery and Data Storage

- 1TB hard drive
- Up to 90 min scanning time with battery
- Lightweight system design (12lbs) with traveling case for outdoor diagnosis
- Raw data enables advanced post-processing when the exam is completed

Versatile Multi-functional Cart

- External LCD monitor provides more perspective
- Up to 3 transducer connectors
- Height adjustable platform
- External DVD R/W storage
- Compact design enables higher flexibility





Mindray Global Headquarters
Shenzhen, China



Mindray Innovation Center
San Jose, California



Mindray North America Headquarters
Mahwah, New Jersey

**Mindray North America
Innovation Center**

2100 Gold Street
San Jose, CA 95002

Tel: 800.288.2121 Support: 877.913.9663 www.mindray.com

©2018 Mindray DS USA, Inc. Subject to change. Mindray® is a registered trademark of Shenzhen Mindray Bio-Medical Electronics Co. Ltd. 08/18 P/N: 0002-08-40365 Rev A

